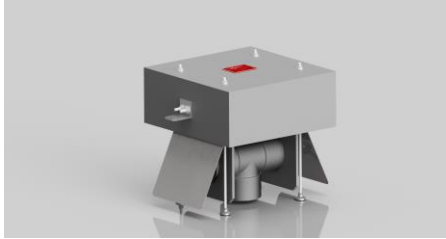


6739 Washington Ave. Whittier CA 90601

www.waterbypureflow.cominfo@waterbypureflow.com

+1 562 945 3425

+1 800 926 3426



Floating Decanter for Backwash Water Reclaim Tanks

Description:

The Floating Decanter for backwash water reclaim, when paired with a reclaim pump, automatic valves, and controls, is used to remove supernatant from backwash water reclaim tanks after the residual solids have settled.

- NSF61 approved materials
- Self-righting articulating design (will not tip over)
- Vortex breaking feature (backwash reclaim pump will not entrain air)
- Installation kits and drawings are available

Specification:

The Floating Decanter assembly shall be constructed solely of materials proven to withstand corrosion caused by submersion in water containing metal oxides, chlorine, and other residual solids. The decanter body shall be designed to fit through the top tank hatch. The body must be flush welded at all seams to create a watertight enclosure. All penetrations through the body of the decanter shall be filled with silicon to retain the watertight seal.

The decanter shall have four (4) legs to ensure that it is completely self-supporting while free standing at low water levels or in an empty tank. Each leg shall have a permanent rubber cap attached at the bottom to prevent damage to the tank floor, or its supporting surface, while not afloat.

The decanter must remain level on all planes regardless of the water level in the tank. The decanter assembly must allow the connection to move freely rather than causing the decanter to rotate and possibly overturn. The decanter must inhibit the water inlet area from vortexing, and the supernatant reclaim pump from sucking in air, to prevent pump cavitation. All hardware shall be made of 316L stainless steel, or equal.

The decanter shall be provided with a predetermined length of flexible reinforced suction hose, and / or rigid pipe, as the installation requires. The hose shall have a minimum rating of 28 inches of mercury vacuum and a minimum working pressure of 30 psi. The hose shall be molded from PVC, with a PVC helix exterior reinforcement, and have a smooth interior and a corrugated exterior. The hose must be "pipe-sized" and capable of slipping over the outside diameter of conventionally sized pipe. All hose must be accompanied by a minimum of two (2) spiral pipe-sized double bolt hose clamps.

The floating decanter shall be accompanied by an application specific drawing depicting all the information required to properly install the decanter within the tank that will be installed. The Floating Decanter shall be manufactured in the USA by Pureflow Filtration Division and shall be selected from the following standard sizes.

Inlet Size	Max Flow Rate	Model Number
2" Floating Decanter	50 gpm	PFD-16G-8-2
3" Floating Decanter	100 gpm	PFD-16G-8-3
4" Floating Decanter	200 gpm	PDF-18G-8.5-4
6" Floating Decanter	400 gpm	PDF-24G-10-6
8" Floating Decanter	800 gpm	PDF-28G-10-8